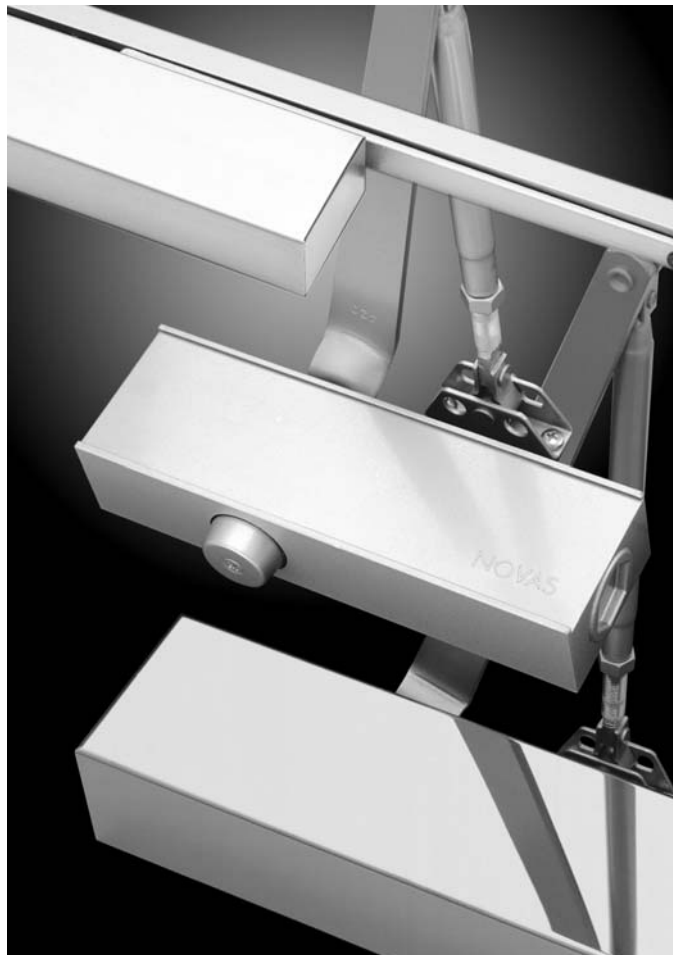




Door Controls

NOVAS



Contents

- Introduction
- Door Closers Available Functions
- Numbering System
- Guarantee
- 3000 Series Door Closers
- 1000 Series Door Closers
- 1300V Series Door Closers
- 1500 Series Door Closers
- Stainless Steel Cover and Accessories
- 4000 Series Concealed Door Closers
- 4200 Series Concealed Door Closers
- 8800 Series Floor Spring

Introduction

Novas hydraulic door closers and floor springs are used to suit various residential and commercial applications.

Door closers are used to close hinged leaf doors and floor springs are used to close the doors equipped with pivot hinges.

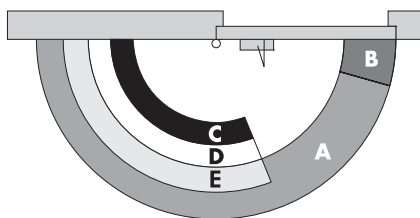
The size and weight of the door is the main consideration in selecting a closer or floor spring of the correct strength. Recommended door widths and weights for each closer or floor spring assume normal operating conditions. If a door is of exceptional height, weight, special construction, or if air pressure differentials exist, a higher power closer or floor spring should be considered.

A door closer effectively increases the loading on door hinges and their rate of wear. It is recommended that any door fitted with a door closer should use 3 or more Novas ball bearing hinges.

Door Closers Available Functions

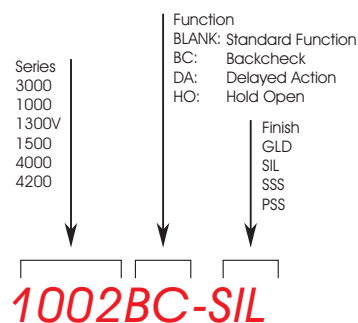
- A. Power Adjustment
Simple adjustment by rotation of a captive screw adjusts the size of the closer to the desired strength.
- B. Back check
Adjustable backcheck provides cushioning effect on opening to give protection to the door and fittings.
- C. Closing Speed
Captive valve is conveniently located on the face of the door closer to control the closing speed.
- D. Latching Speed
A separate adjustment valve to accelerate or decelerate the door to ensure positive latching.
- E. Delayed Action
Delays the closing action of the door to allow slow moving traffic to pass.

Adjustment Details



A	Closing Range	15° - 180°
B	Latching Range	0° - 15°
C	Backcheck Range	70° - 180°
D	Hold Open Range	70° - 180°
E	Delayed Action	70° - 180°

Numbering System



Guarantee

Nova Hardware guarantees all their products against defects in workmanship and materials subject to inspection and confirmation of fair wear and tear within the normal working life of the product.

Nova Hardware assumes no liability for:

1. Improper installation or failure to follow fitting instructions.
2. Product failure due to improper maintenance or unfair wear and tear.
3. Indirect or consequential loss or damage.
4. Cost of removal and/or replacement.
5. Cost of freight and/or travelling expenses.
6. Some plated finishes are classified as soft finishes.

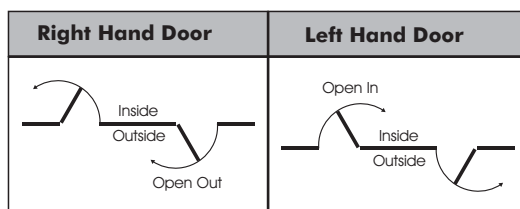
Deterioration is possible under some climatic conditions and can not be unconditionally guaranteed. Consult your local Nova representative or agent for advice on all finishes.

Finish

BRZ	Bronze
GLD	Gold
SIL	Silver
CA	Clear Anodized
CP	Polished Chrome Plated
PCP	Pearl Chrome Plated
SC	Satin Chrome Plated

ZP	Zinc Plated
PB	Polished Brass
SB	Satin Brass
PSS	Polished Stainless Steel
SSS	Satin Stainless Steel

Handing



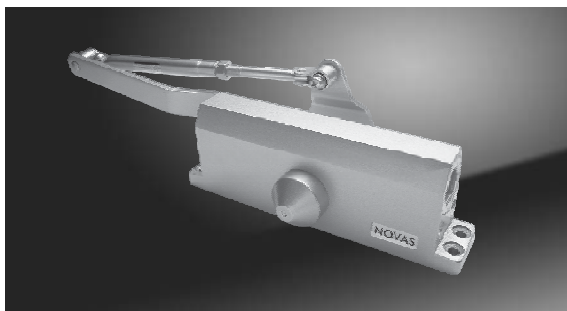
Change of Product Specifications

As a result of continuous improvements to our products, we reserve the right to alter standard product specifications and dimensions without prior notice.

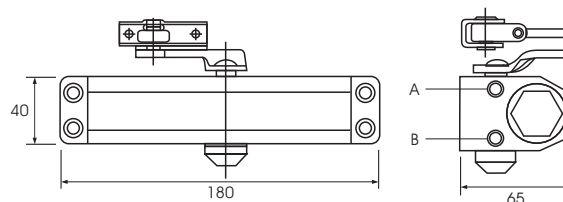
Contact:

Shanghai Nova Hardware Co.,Ltd
 402/Bld 4, No.1221 Yan An Xi Road,
 Shanghai 200050, China
 Phone: 86-21-6252 9138
 Fax: 86-21-6252 7978
 Email: sales@nova-hardware.com
 Web: www.nova-hardware.com

3000 Series Door Closers



Limiting Dimensions



Selection Chart

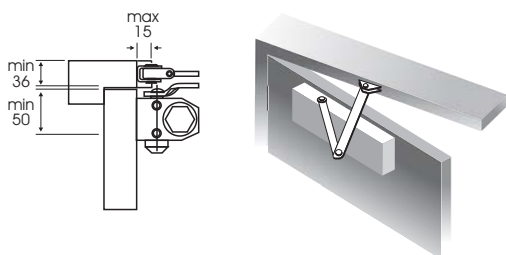
	Regular Arm/Top Jamb		Parallel/Track Arm		Door Weight(kg) Reference only	Function Available		
Cat No.	Door Width (mm)		Door Width (mm)			Latching Speed	Closing Speed	Hold Open
	Interior	Exterior	Interior	Exterior				
3002	900	800	800	700	25-45	●	●	○
3003	1050	900	900	800	40-65	●	●	○

Note: ● Standard ○ Optional

Mounting Applications

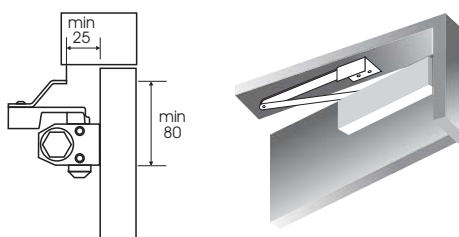
Regular Arm Mounting (Pull Side)

Cat No.:
3002
3003



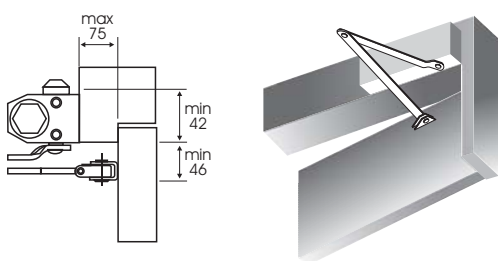
Parallel Arm Mounting (Push Side)

Cat No.:
3002PA
3003PA



Top Jamb Mounting (Push Side)

Cat No.:
3002
3003



Features

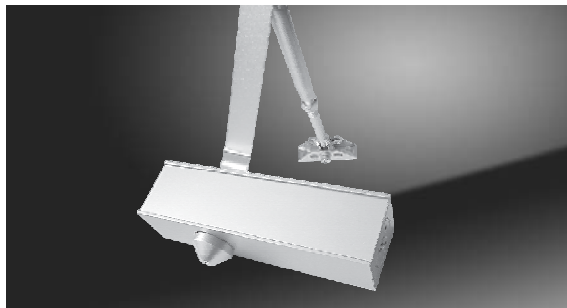
- Variable closing force 2/3
- Reversible for handing

Finish

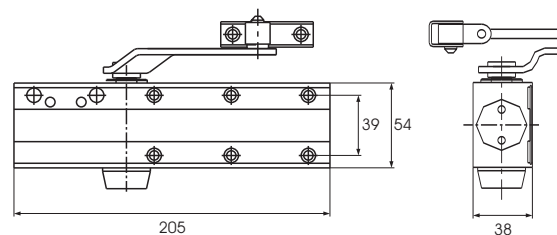
SIL: Silver
GLD: Gold



1000 Series Door Closers



Limiting Dimensions



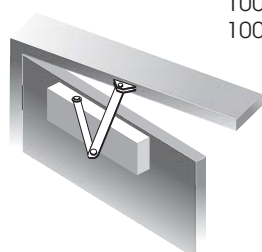
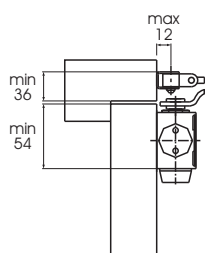
Selection Chart

	Regular Arm/Top Jamb		Parallel/Track Arm		Door Weight(kg) Reference only	Function Available			
Cat No.	Door Width (mm)		Door Width (mm)			Latching Speed	Closing Speed	Back Check	Hold Open
	Interior	Exterior	Interior	Exterior					
1002	900	800	800	700	25-45	●	●	○	○
1003	1050	900	900	800	40-65	●	●	○	○
1004	1200	1050	1050	900	60-85	●	●	○	○

Note: ● Standard ○ Optional

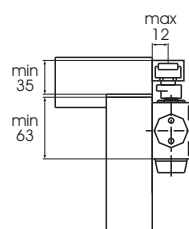
Mounting Applications

Regular Arm Mounting (Pull Side)



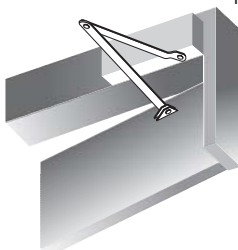
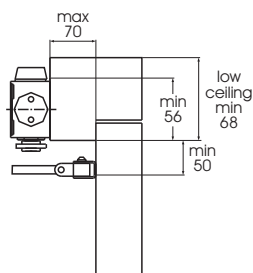
Cat No.:
1002
1003
1004

Track Arm Mounting (Push Side)



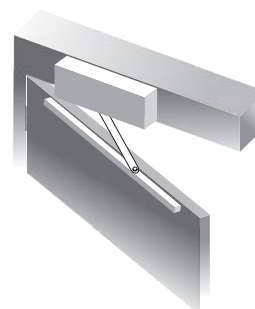
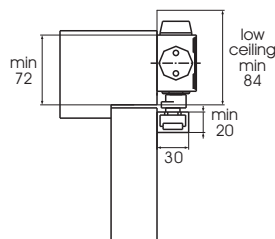
Cat No.:
1002TR
1003TR
1004TR

Top Jamb Mounting (Push Side)



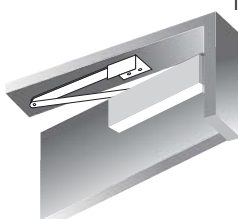
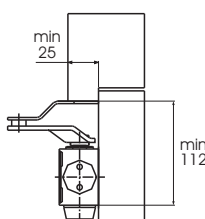
Cat No.:
1002
1003
1004

Top Jamb Track Arm Mounting (Pull Side)



Cat No.:
1002TR
1003TR
1004TR

Parallel Arm Mounting (Push Side)



Cat No.:
1002PA
1003PA
1004PA

Features

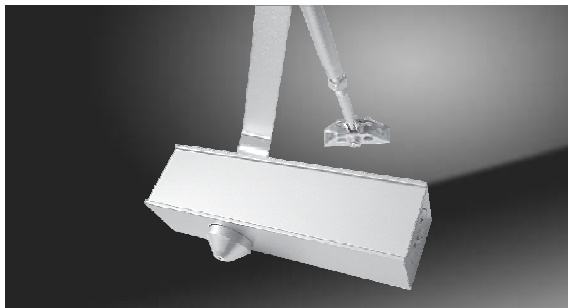
- Slim line design
- Variable closing force 2/3/4
- Reversible for handing
- Stainless steel cover available

Finish

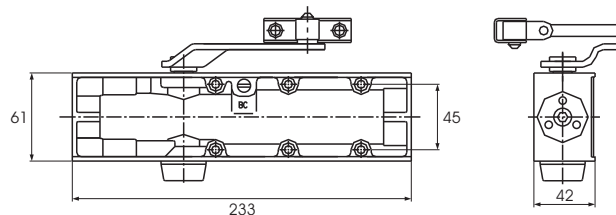
SIL: Silver
GLD: Gold
SSS: Satin Stainless Steel
PSS: Polished Stainless Steel



1300V Series Door Closers



Limiting Dimensions



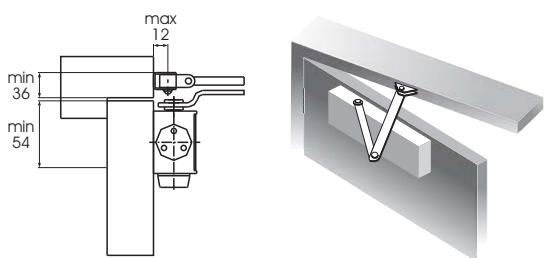
Selection Chart

	Regular Arm/ Top Jamb		Parallel/Track Arm		Door Weight(kg) Reference only	Function Available				
Size	Door Width (mm)		Door Width (mm)			Power Adjust	Latching Speed	Closing Speed	Back Check	Hold Open
	Interior	Exterior	Interior	Exterior						
2	900	800	800	700	25-45	● (2-4)	●	●	○	○
3	1050	900	900	800	40-65					
4	1200	1050	1050	900	60-85					

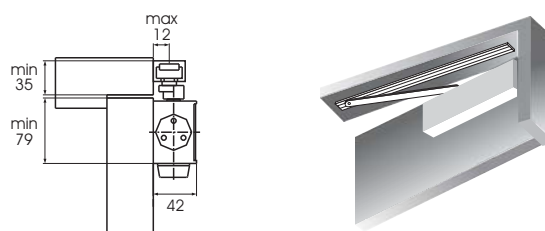
Note: ● Standard ○ Optional

Mounting Applications

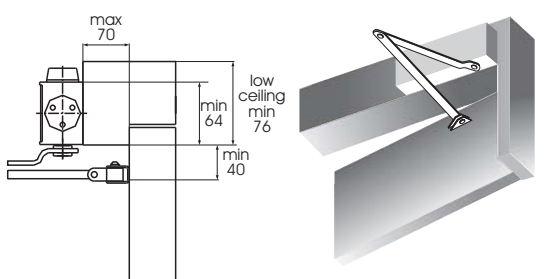
Regular Arm Mounting (Pull Side) Cat No.: 1300V



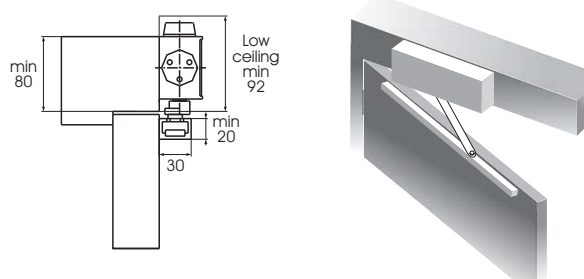
Track Arm Mounting (Push Side) Cat No.: 1300VPA



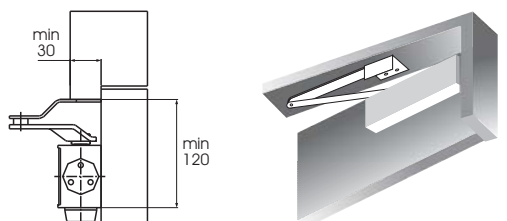
Top Jamb Mounting (Push Side) Cat No.: 1300V



Top Jamb Track Arm Mounting (Pull Side) Cat No.: 1300VTR



Parallel Arm Mounting (Push Side) Cat No.: 1300VTR



Features

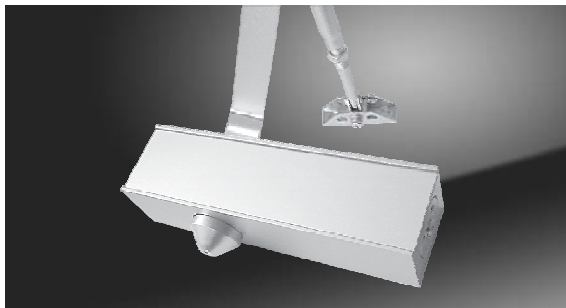
- Slim line design
- Reversible for handing
- Power adjustable (Size2-4)
- Stainless steel cover available

Finish

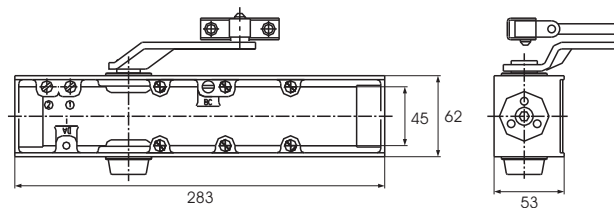
SIL: Silver
GLD: Gold
SSS: Satin Stainless Steel
PSS: Polished Stainless Steel



1500 Series Door Closers



Limiting Dimensions



Selection Chart

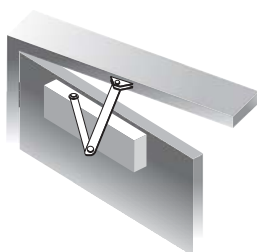
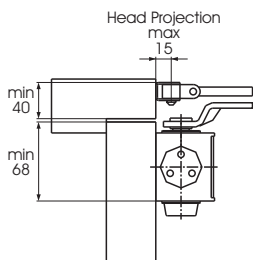
	Regular Arm/ Top Jamb		Parallel/Track Arm		Door Weight(kg) Reference only	Function Available					
Size	Door Width (mm)		Door Width (mm)			Power Adjust	Latching Speed	Closing Speed	Delayed Action	Back Check	Hold Open
	Interior	Exterior	Interior	Exterior							
2	900	800	800	700	25-45	● (2-5)	●	●	●	○	○
3	1050	900	900	800	40-65						
4	1200	1050	1050	900	60-85						
5	1350	1200	1200	1050	80-115						

Note: ● Standard ○ Optional

Mounting Applications

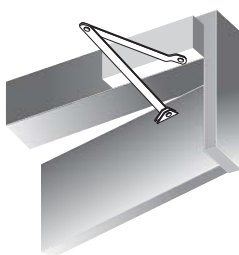
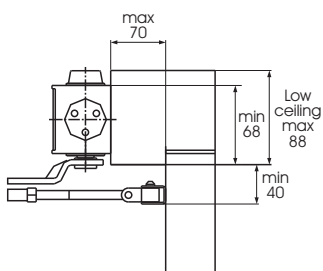
Regular Arm Mounting (Pull Side)

Cat No.: 1500



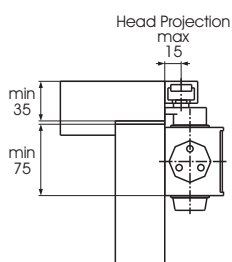
Top Jamb Mounting (Push Side)

Cat No.: 1500



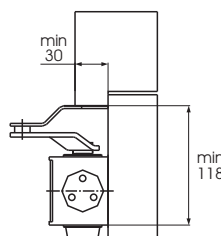
Track Arm Mounting (Push Side)

Cat No.: 1500TR



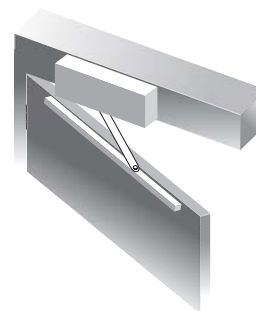
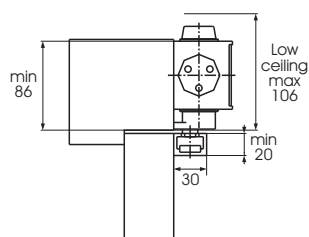
Parallel Arm Mounting (Push Side)

Cat No.: 1500PA



Top Jamb Track Arm Mounting (Pull Side)

Cat No.: 1500TR



Features

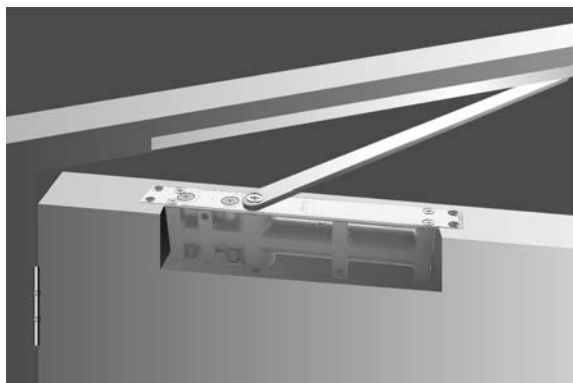
- Slim line design
- Reversible for handing
- Power adjustable (Size2-5)
- Stainless steel cover available

Finish

SIL: Silver
GLD: Gold
SSS: Satin Stainless Steel
PSS: Polished Stainless Steel



4000 Series Concealed Door Closers



Features

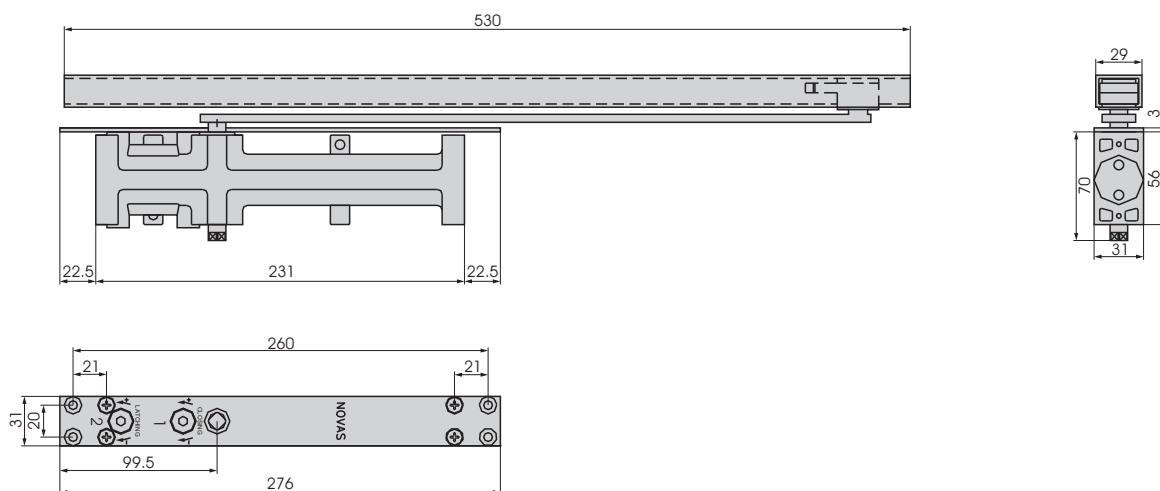
- High pressure aluminium body
- Rack and pinion hydraulic controlled
- Reversible for handing
- Only suitable to internal door

Selection Chart

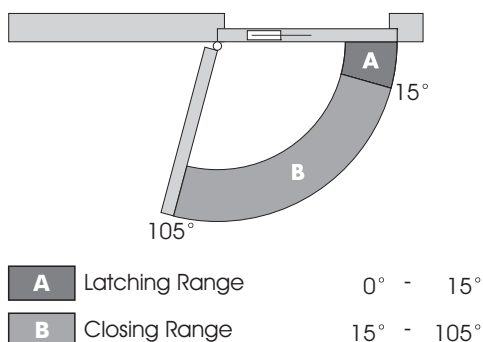
Cat No.	Size	Door Width	Door Weight(kg) Reference only	Latching Speed	Closing Speed	Hold Open
4002	2	700-900	25-45	●	●	○
4003	3	800-1050	40-65	●	●	○

Note: ● Standard ○ Optional

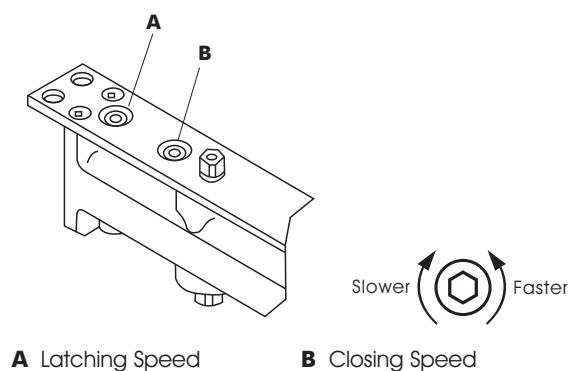
Limiting Dimensions



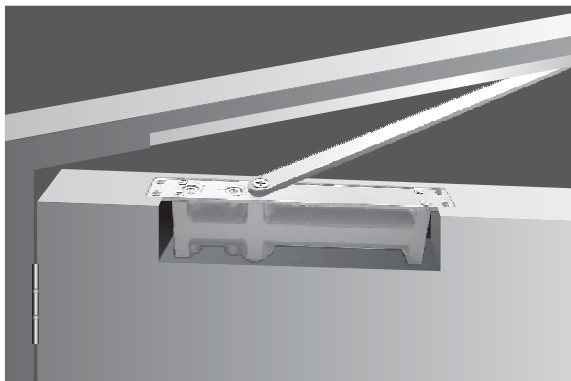
Adjustment Range



Adjustment Guidance



4200 Series Concealed Door Closers



Features

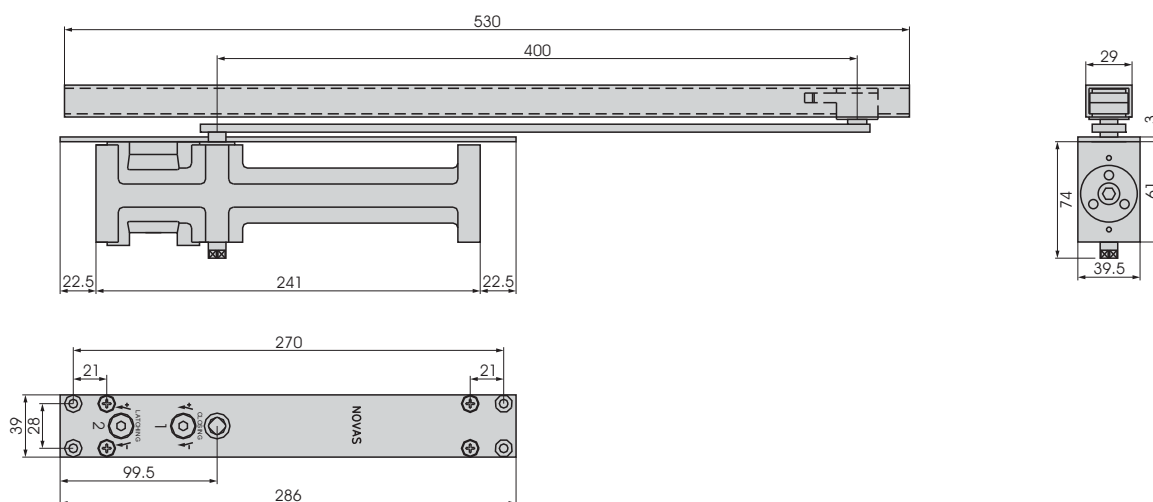
- High strength cast iron cylinder
- Rack and pinion hydraulic controlled
- Reversible for handing
- Specially suitable to external and heavy-duty doors

Selection Chart

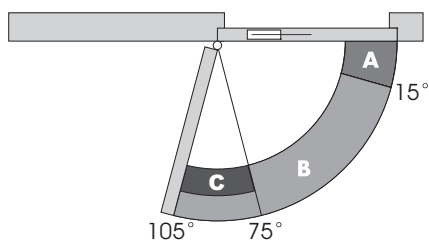
Cat No.	Size	Door Width (Interior)	Door Width (Exterior)	Door Weight(kg) Reference only	Latching Speed	Closing Speed	Back Check	Hold Open
4204	4	1050	950	60-85	●	●	○	○
4205	5	1200	1050	80-120	●	●	○	○

Note: ● Standard ○ Optional

Limiting Dimensions

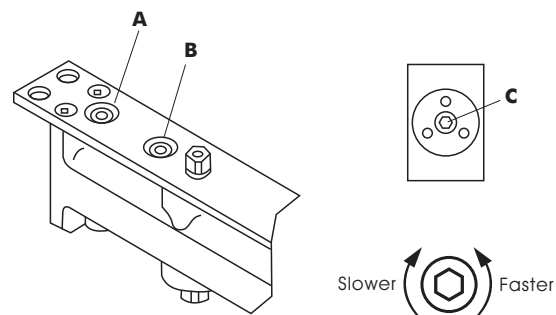


Adjustment Range



A	Latching Range	0° - 15°
B	Closing Range	15° - 105°
C	Back Check	75° - 105°

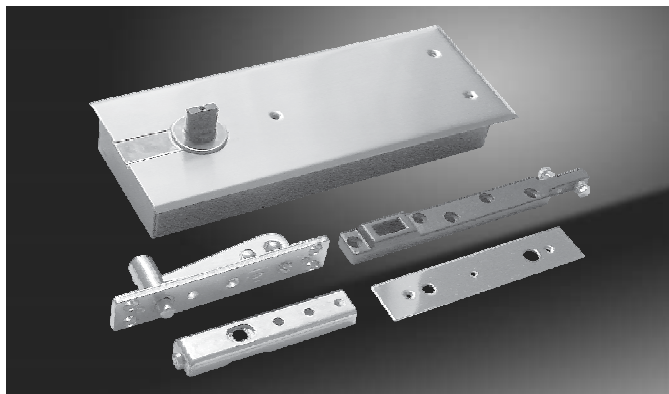
Adjustment Guidance



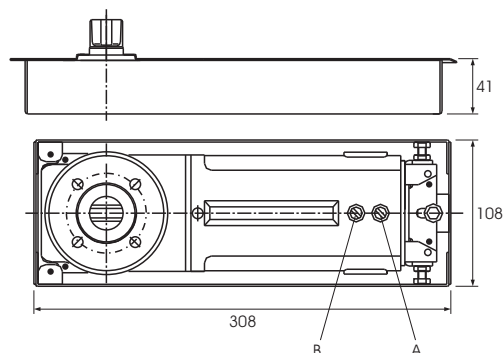
A Latching Speed **B** Closing Speed **C** Back Check



8800 Series Floor Spring



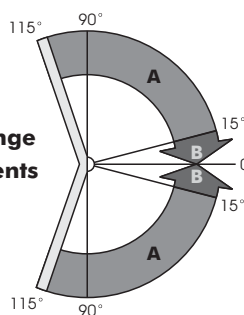
Limiting Dimensions



Features

- Cast iron body
- Double hydraulic cylinder
- EN1154 Size 3/4/5 power

Closing Range & Adjustments



A Closing Speed Range (115° ~ 15°)

B Latching Range (15° ~ 0°)

Selection Chart

Cat No.	Size	Door Width (mm)	Door Weight (kg)	Closing Speed adj	Latching action	Hold Open
8803	3	950X2100	60-85	●	●	○
8804	4	1000X2100	80-120	●	●	○
8805	5	1100X2200	100-150	●	●	○

Note: ● Standard ○ Optional

Function

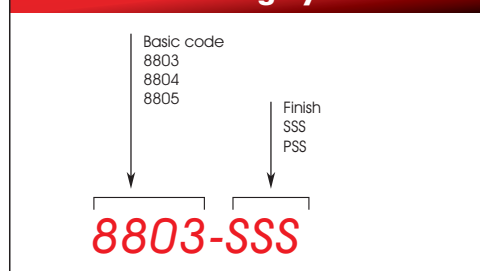
Door Control

Two independent adjustment valves provide full hydraulic control from 115° -15° of closing and 15 - 0° of latching range.

Fully Adjustable

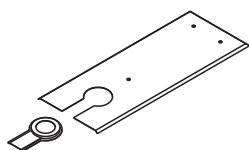
The 8800 series floor spring is positionally adjustable for height 4mm, width 10mm and length 6mm.

Numbering System



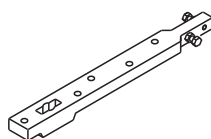
Accessories

Spring cover



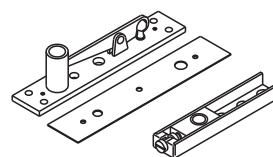
Cat No. 88010
Finish SSS/PSS

Bottom pivot



Cat No. 88012

Upper pivot

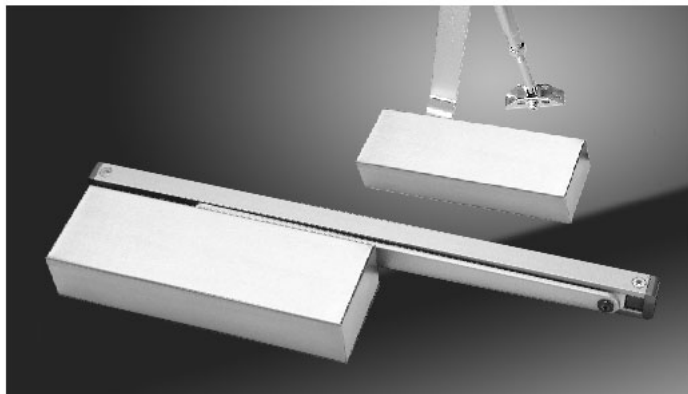


Cat No. 88014



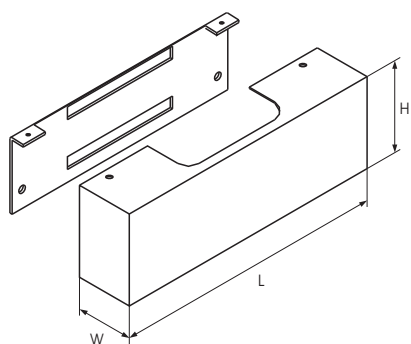
Stainless Steel Cover and Accessories

Door Closer with Stainless Steel Cover



Features

- Elegant looking
- Integrated with other Novas stainless steel products
- Grade 304 stainless steel
Grade 316 available upon request



Order the cover together with Novas door closer:

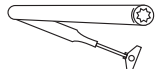
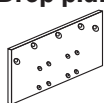
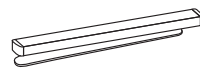

Door Closer Code
Function
Finish
SSS
PSS

1002BC-SSS

Cat Number	Door Closer to suit	L	W	H	Finish
15010	1000	215	45	72	SSS/PSS
15013	1300V	243	50	80	SSS/PSS
15015	1500	293	62	82	SSS/PSS

Cat No does not include the door closer

Accessories

Accessories Cat Number Door Closers	Hold Open Arm  Finish: SIL	Drop plate  Finish: SSS	Track Arm  Finish: SIL	Parallel Arm Bracket  Finish: SIL
1000	1000-10	1000-20	1000-30	1000-PAB
1300V	1300V-10	1300V-20	1300V-30	1300V-PAB
1500	1500-10	1500-20	1500-30	1500-PAB
3000	3000-10	3000-20	X	3000-PAB

Numbering Example

Accessories Code
Finish
SIL

1300V-10-SIL

